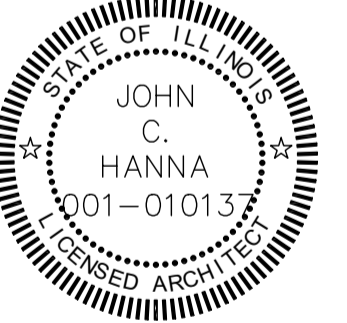


**WARNING:**  
This Plan Protected under Copyright Laws. Original mylar drawing on file at the Architects' office can be reproduced with the Architects' permission only. If someone wishes to copy this plan, contact John Hanna (312) 750-1800

ISSUED FOR REVIEW  
ISSUED FOR REVIEW  
ISSUED FOR PERMIT NOVEMBER 29, 2023  
ISSUED FOR BID



PROJECT NAME & ADDRESS  
**1503 WEST WALTON STREET  
CHICAGO, ILLINOIS  
2 UNIT S STORY  
APARTMENT BUILDING**

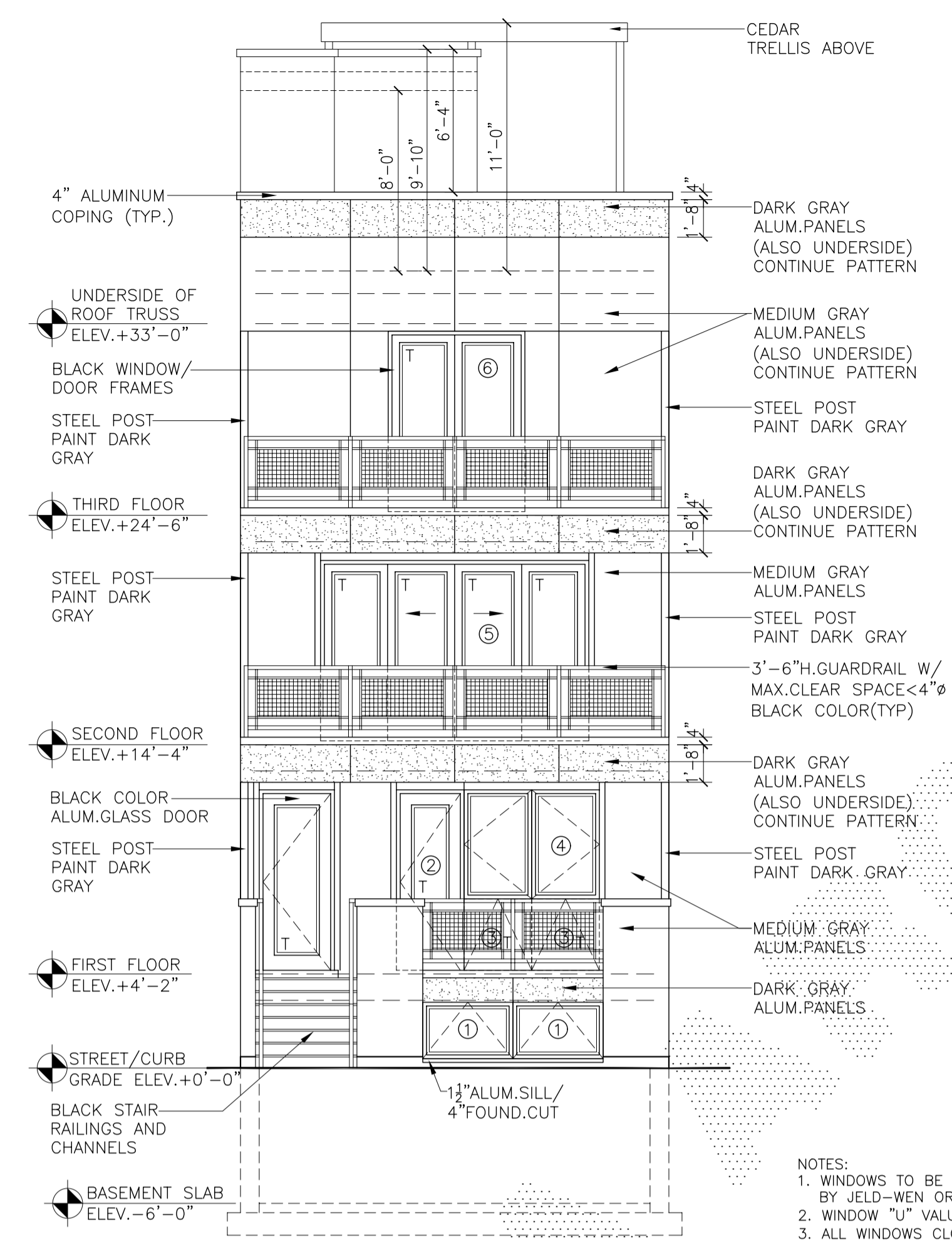
SHEET TITLE  
**BUILDING ELEVATIONS**

FILENAME

SHEET NUMBER  
**A-6**

WINDOW SCHEDULE					
MARK	TYPE	SIZE	LT. SQ.FT.	VENT SQ.FT.	JELD-WEN NO.
1	AWNING	4'-0" x 2'-6 1/2"	7.03	7.84	SCAW-4830-1
2	IN-SWING DR.	3'-0" x 8'-0"	13.98	21.46	SCHD-3-Ox8-0
3	AWNING	3'-0" x 3'-0 1/2"	6.28	7.14	SCAW-3636-1
4	CASEMENT	6'-0" x 5'-0 1/2"	22.58	9.88	SCCA-3660-2
5	SLIDING DR.	11'-10 1/2" x 8'-0"	71.60	37.98	SCS3-12-00x8-0
6	SLIDING GL.DR.	6'-0" x 8'-0"	35.80	18.99	SCS3-6-0x8-0
7	CASEMENT	3'-0" x 5'-0 1/2"	11.29	4.94	SCCA-3660-1
8	CASEMENT	5'-0" x 5'-0 1/2"	18.06	20.08	SCCA-3060-2
9	AWNING	3'-0" x 2'-6 1/2"	5.02	5.76	SCAW-3630-1
10	FIXED	6'-0" x 5'-0 1/2"	22.00	-	-
11	CASEMENT	6'-0" x 4'-0 1/2"	17.56	19.76	SCCA-3648-2

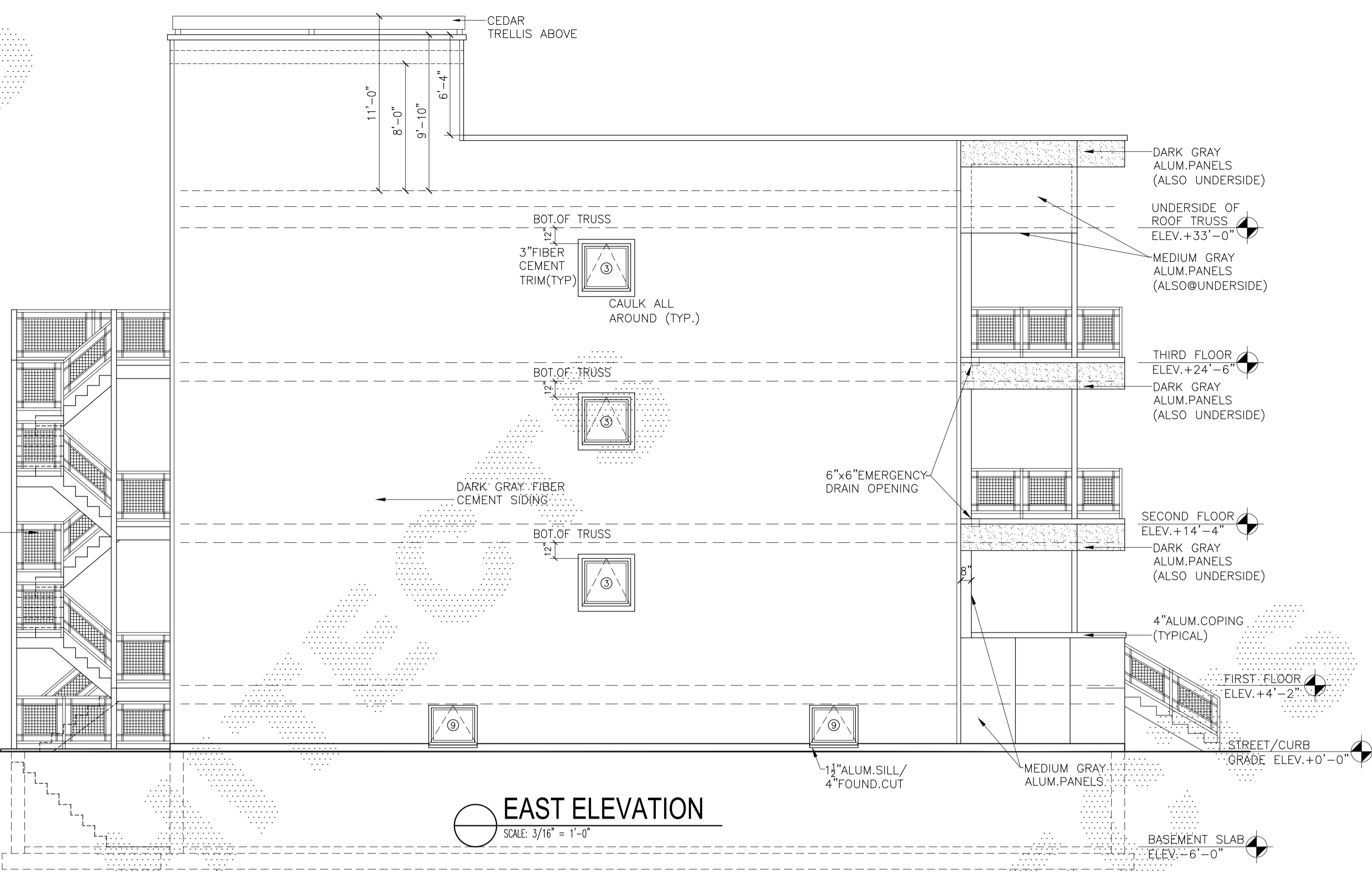
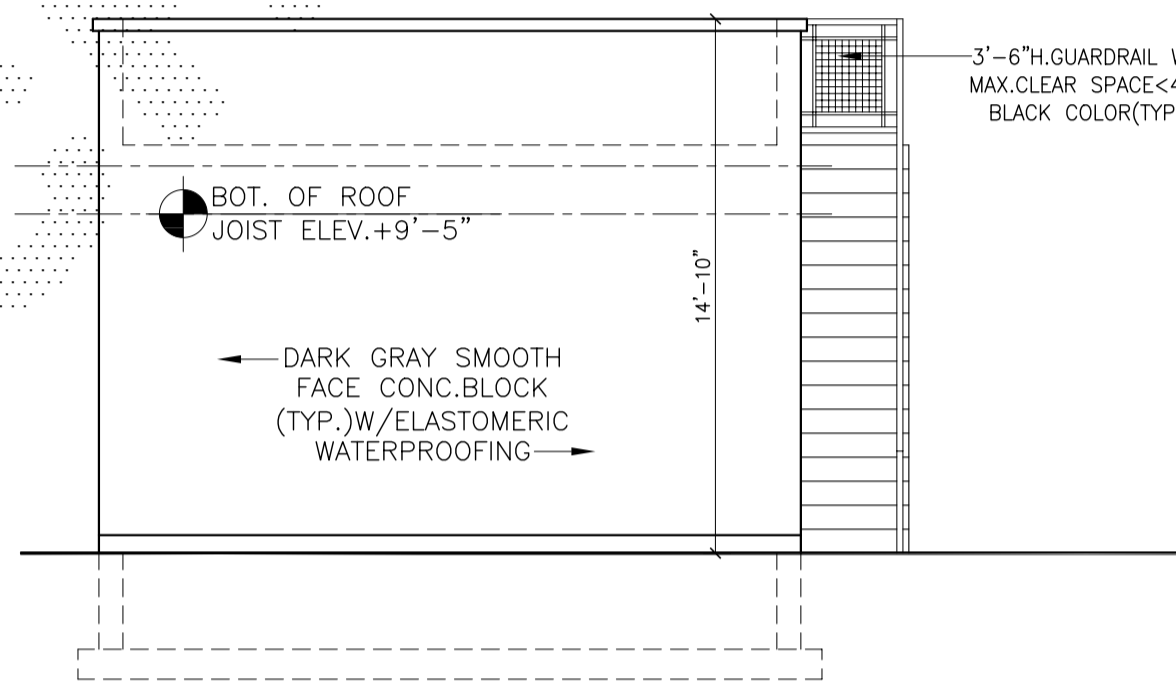
T - TEMPERED SAFETY GLAZING REQUIRED BY CODE  
13-124-350 Safety glazing materials. All glazed doors, and any glazed panel more than 18 inches in width immediately adjacent to any door wherein the sill of such glazed panel is less than 24 inches above the floor shall be considered hazardous locations and shall be glazed with safety glazing materials. Glazed doors shall include, among others, the following: sliding glass doors, storm doors, shower doors and bathtub enclosures.



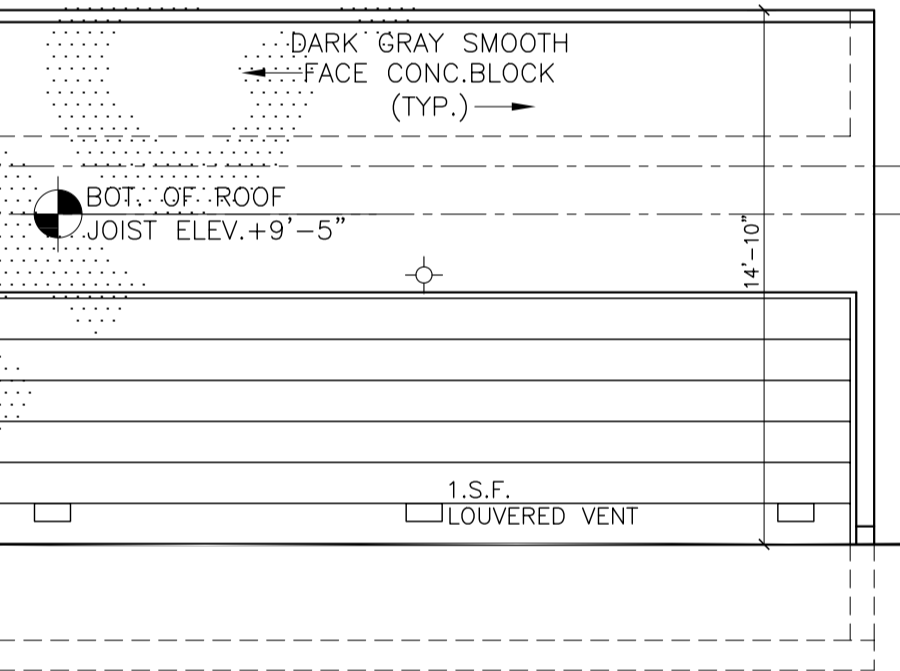
**NORTH ELEVATION**  
SCALE: 3/16" = 1'-0"

NOTE:  
DO NOT INSTALL ANY ADDITIONAL LIMESTONE AT ELEVATIONS WITHOUT ARCHITECTS' CONSENT. MASONRY CONTRACTOR IS NOT TO CHANGE OR OMIT ANY ELEVATION DETAILS WITHOUT CONTACTING ARCHITECT.

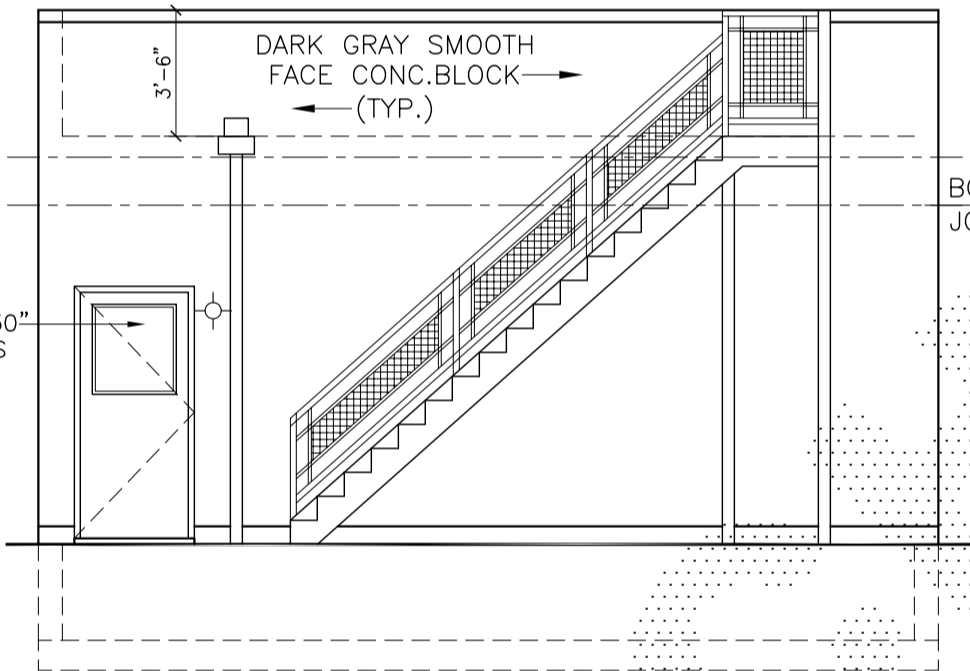
NOTES:  
WINDOW SUPPLIER/MANUFACTURER TO DESIGN WINDOWS TO COMPLY WITH CITY OF CHICAGO WIND LOAD REQUIREMENTS DESIGN AND PROVIDE ALL NECESSARY MULLION REINFORCEMENTS (HORIZONTAL AND VERTICAL) AND ALL NECESSARY STIFFENERS & SUPPORTS AS NECESSARY AND FOR WINDOW SYSTEM AND CONFIGURATION TO COMPLY WITH ALL CITY OF CHICAGO WIND LOAD REQUIREMENTS.



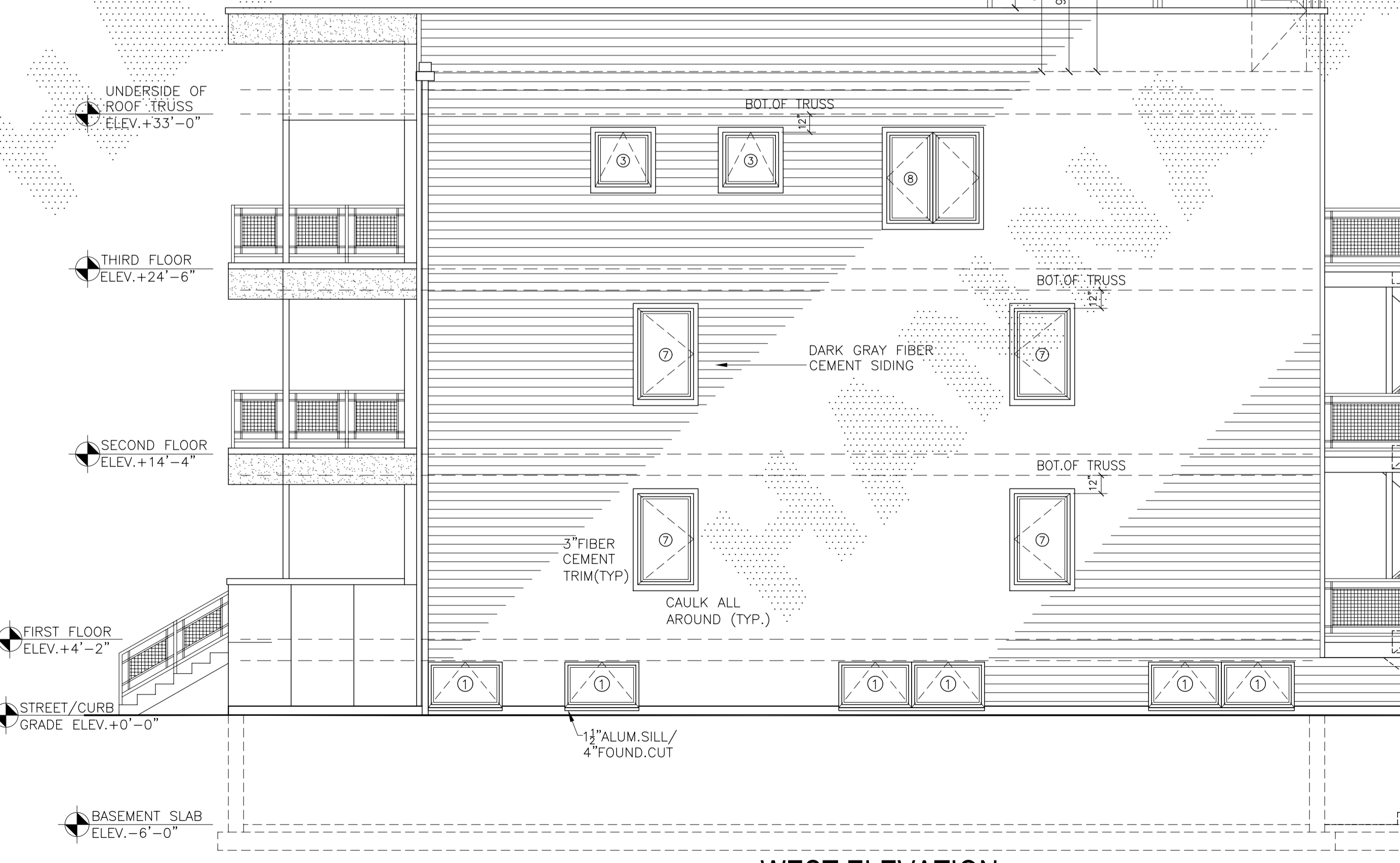
**EAST ELEVATION**  
SCALE: 3/16" = 1'-0"



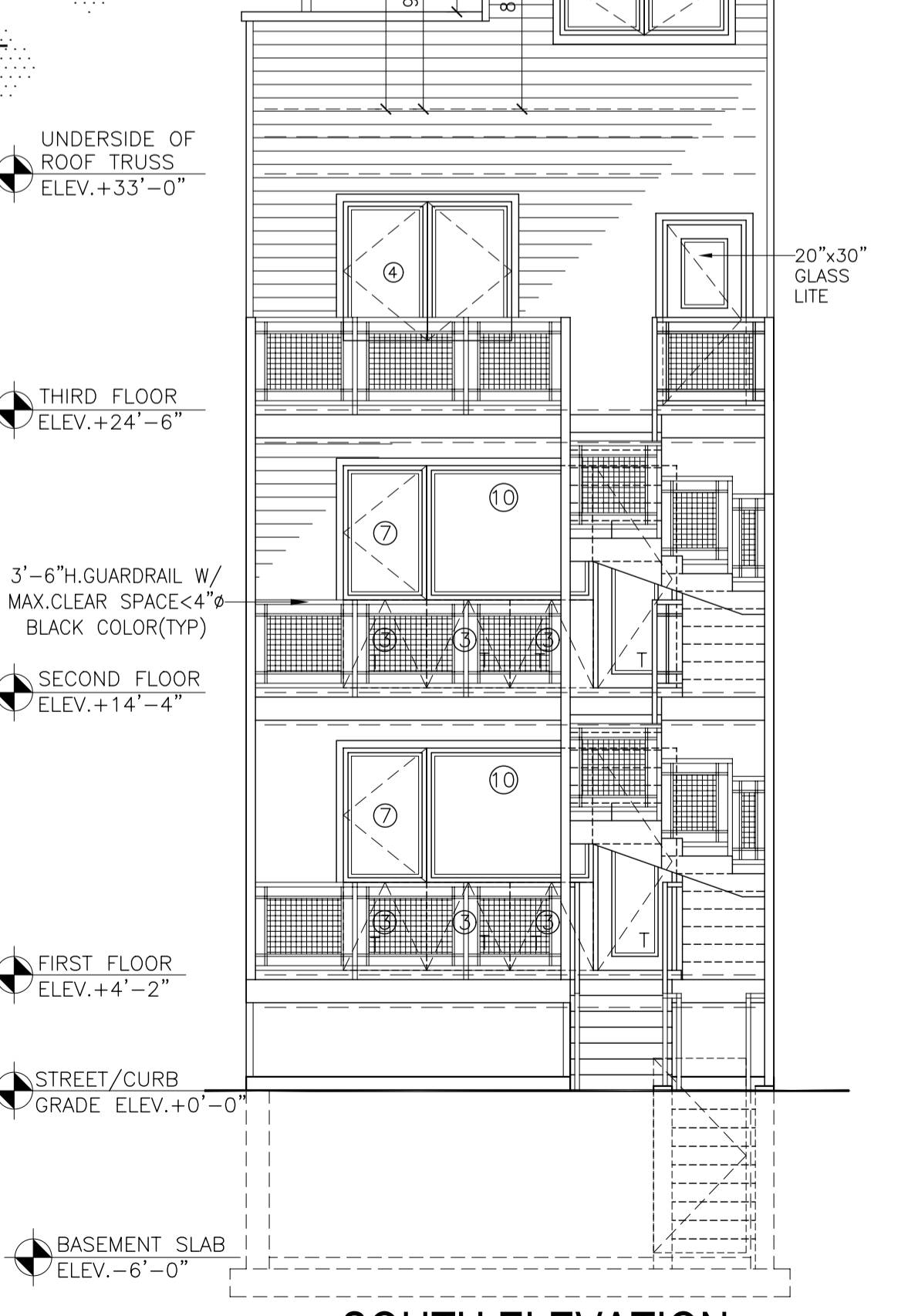
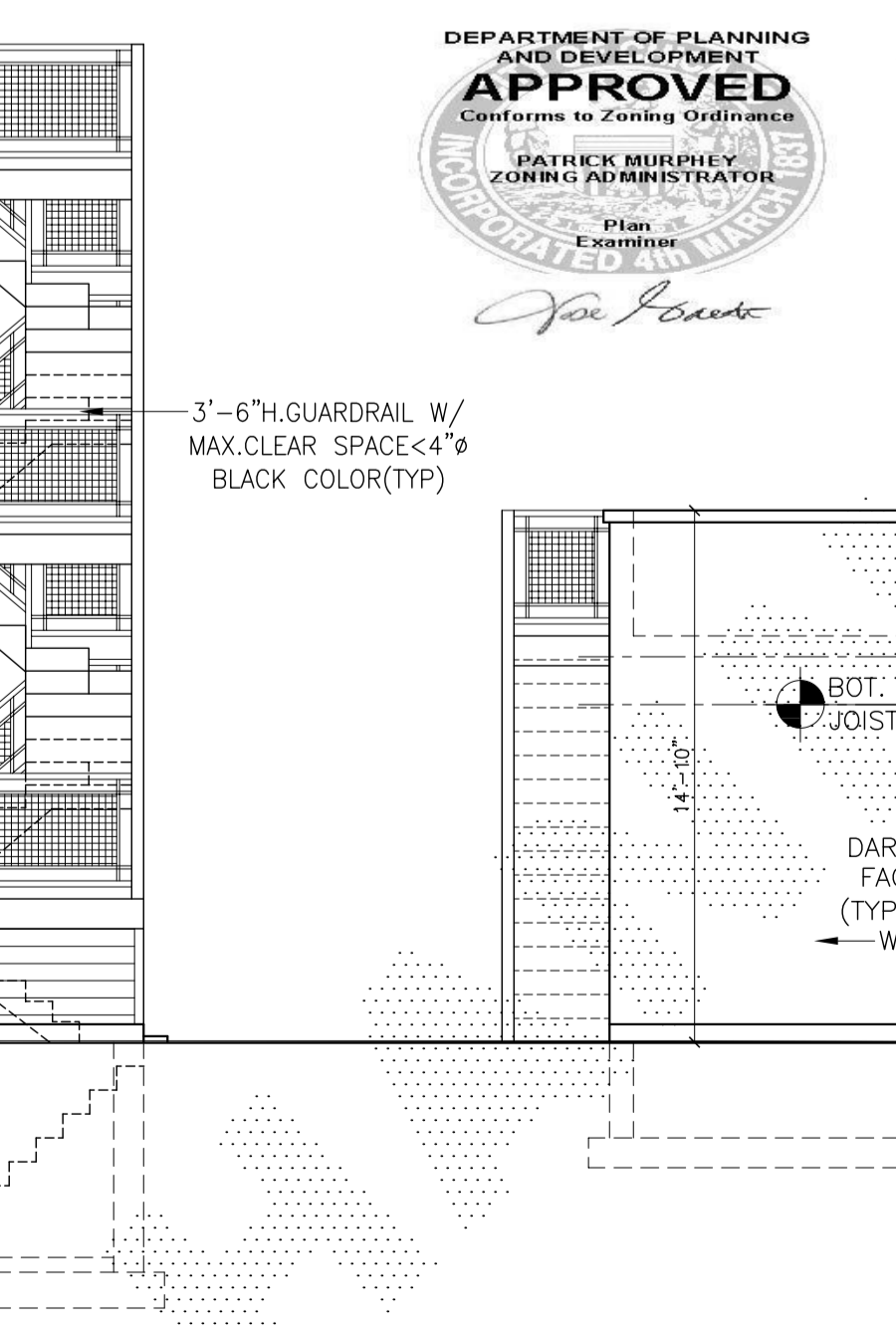
**GARAGE SOUTH ELEVATION**  
SCALE: 3/16" = 1'-0"



**GARAGE NORTH ELEVATION**  
SCALE: 3/16" = 1'-0"



**WEST ELEVATION**  
SCALE: 3/16" = 1'-0"



**SOUTH ELEVATION**  
SCALE: 3/16" = 1'-0"



**ADMINISTRATIVE ADJUSTMENT FILE#23-180  
SELF CERT 2019 CBC: FULL BUILDING PERMIT FOR 3  
STORY 2 DWELLING UNIT BUILDING WITH BASEMENT,  
ROOFTOP DECK, ROOFTOP STAIR ENCLOSURE,  
FRONT OPEN BALCONY AT 1ST/2ND/3RD STORY,  
REAR OPEN DECK WITH STAIR AT 1ST/2ND/3RD STORY,  
DETACHED 3 CAR GARAGE WITH ROOFTOP DECK.  
STAMP FOR 1503 W. WALTON STREET. 12-11-2023**